

Oakland Township Parks and Recreation Commission Newsletter

Summer 2021

The Mission of Oakland Township Parks and Recreation Commission is to provide a sustainable system of parks, trails, programs, amenities, and services which create memorable experiences and a sense of place, contributes to the economic value of the Township and preserves the historical and natural heritage of the landscapes for existing and future generations.



Basic Kayaking June 2020

Park Camps p 10, 11, 12
 Programs Pgs. 8-12
 Phragmites Help p 14
 National Trails Day Pg 24

Inside this issue:

Paint Creek Junction Trailhead [1, 29](#)
What's New [2, 28](#)
Drive In Movies [3-4](#)
Classical Concert [5](#)
Lost Lake Nature Center Open Houses [6](#)
Massasauga Article [7, 27](#)
Programs [8-12](#)
Compass Article [13, 20](#)
Phragmites Information [14](#)
Stewardship Programs [15](#)
Paint Creek Junction Trailhead Site Plan [16-17](#)
Stewardship Update [18](#)
Pollinators in the Parks [19, 20](#)
Team Update [21](#)
Disc Golf [21](#)
Historic District Commission [22-23](#)
Paint Creek Trail News [24-26](#)
Program Registration Form [30](#)
Parks Map [31](#)
Commissioners/Staff [Back Cover](#)

Moving Forward with New Trailhead at Paint Creek Junction Park!

By Mindy Milos-Dale, Director, Oakland Township Parks and Recreation

Oakland Township's 6-acre Paint Creek Junction Park is located west of Orion Road and south of Clarkston Road, adjacent to the Paint Creek Trail. It was originally purchased to meet residents' desire for a trailhead in the northern section of the Paint Creek Trail.

This trailhead project includes a 35-space universally accessible parking lot with horse trailer parking, an access trail, two unisex universally accessible vault toilets, a well for potable water and a picnic area. Interpretive signage will incorporate the trail's natural and cultural background; sharing information about the Paint Creek Trail's Railroad history, Paint Creek Junction's section of the Detroit Urban Railroad, and how railroads contributed to the preservation of native prairie areas. See the project site plan on pages 16-17.



In 2019, Oakland Township Parks and Recreation refined the project design with the help of community members. We also learned that the Township would receive a significant Michigan Natural Resources Trust Fund grant to cover the majority of project expenses. Then COVID-19 arrived in 2020 and the project got delayed, along with many other tasks.

In 2021, the project has regained its momentum! Oakland Township has been awarded an additional \$50,000 in grant funding from the Ralph C. Wilson, Jr. Legacy Funds at the Community Foundation for Southeast Michigan. See pg 2.

(Continued on page 29)

FREE Parks and Recreation Outdoor Summer Events

June 18	Drive In Cinema — Tom & Jerry: The Movie
July 23	Drive In Cinema — Wonder Woman 1984
August 27	Classical Concert — Bayberry String Quartet

See pages 3—5 for complete details.

What's New in the Parks ...

(Continued on page 28)

What is New in the Parks

By Mindy Milos-Dale, Director, Oakland Township Parks and Recreation

Oakland Township Receives \$50,000 Grant for Paint Creek Junction Trailhead from Ralph C. Wilson, Jr. Legacy Funds at the Community Foundation for Southeast Michigan

Oakland Township was one of the nineteen organizations that received grants this year from the Ralph C. Wilson, Jr. Fund for Design and Access. The Design & Access Fund supports projects in southeast Michigan that serve to increase the walkability and bikeability of local communities and increasing outdoor recreational activities within the region.

“The innovative programs in the areas supported by the Wilson Legacy Funds are a testament to the power of philanthropy and endowment,” said Mariam C. Noland, President of the Community Foundation. “Mr. Wilson’s impact continues to grow every year with our ability to support more projects on an increasing list of inspiring organizations that are meeting today’s challenges. For example, this year we saw an increase in the number of Design and Access applications and grants, demonstrating the importance of public spaces during the pandemic.”

The Legacy Funds Grant, combined with a Michigan Natural Resources Trust Fund Grant, and the support of our Township residents, through our Parks and Recreation Millage fund, make this project feasible – without these three

(Continued on page 28)

Bear Creek Nature Park and Marsh View Park Restrooms

After Parks and Recreation requested bids for these permanent restrooms earlier this year, they awarded the contracts to Green Flush LLC. Due to the increased use of public spaces during the pandemic and the associated need for outdoor restrooms, a longer lead time is required for their manufacture. The restrooms are expected to be installed in Spring 2022. These restrooms are being funded by a combination of two Michigan Natural Resources Trust Fund (MNRTF) grants totaling \$100,000 which will be matched by Oakland Township Parks and Recreation millage funds.

Marsh View Park Picnic Pavilion Ready for Use this Summer

We are extremely grateful to long-time Oakland Township resident Russ D’Bartolomeo, for his generous donation of our first picnic pavilion at Marsh View Park! This steel shelter was manufactured and installed last year by Coverworx – Recreational Architecture. Parks and Recreation staff are in the process of completing the project by pouring a concrete pad, installing picnic tables, and opening up the view from the pavilion. Now park visitors will be able to see the archery range, the soccer fields, and the panoramic vistas of the surrounding landscape, exemplifying this park’s historical name: Pleasant View Farm.



Coverworx employees installing pavilion at Marsh View Park.



Drive-In Cinema
Tom & Jerry: The Movie

Friday, June 18

Showtime: 9:30pm  **Gates Open: 8:30pm**

Bear Creek Nature Park

Pre-registration required for each vehicle.

Limited parking available. Covid-19 protocols will be followed for a safe outdoor event. Bring non-alcoholic drinks and snacks. FM station in your vehicle will produce audio.

Register your vehicle online:

oaklandtownship.recdesk.com

**Sponsored by Oakland Township
Parks and Recreation**





Drive-In Cinema

Wonder Woman 1984

Friday, July 23

Showtime: 9:30pm  **Gates Open: 8:30pm**

Bear Creek Nature Park

Pre-registration required for each vehicle.

Limited parking available. Covid-19 protocols will be followed for a safe outdoor event. Bring non-alcoholic drinks and snacks. FM station in your vehicle will produce audio.

Register your vehicle online:

oaklandtownship.recdesk.com

**Sponsored by Oakland Township
Parks and Recreation**





Oakland Township Parks and Recreation
Proudly Sponsors

Bayberry String Quartet

Experience a Night of Exceptional Classical Music



Members of the Bayberry String quartet have been described as playing with "the serenity of a master without a hint of coldness" and with "enormous technical aplomb, a full palette of colors, and above all, the sort of sheer personality that has all but disappeared in this age of virtuosos." The Bayberry String Quartet derives its name from the neighborhood where their first violinist lives that exemplifies the spirit of beautiful art being created through collaboration and grassroots connections. Nurit Pacht, Steffani Kitayama, and Gabe Bolkosky will be joined by Rami Vamos, guitarist and composer with the Chamber Music Society of Lincoln Center.

Friday, August 27, 2021

7:00pm - 9:00pm

Gates open at 5:30pm

Bear Creek Nature Park

Pre-registration required. Limited seating pods available (*maximum 6 people per pod*). Covid-19 protocols will be followed for a safe outdoor event. Bring a blanket, non-alcoholic drinks and snacks.

Register Online: oaklandtownship.recdesk.com



DISCOVER!

LOST LAKE NATURE PARK



Nature Center | Open Houses | Fishing Dock | Sled Hill

A Partnership between Dinosaur Hill Nature Preserve and Oakland Township Parks and Recreation Commission

www.DinosaurHill.org

846 Lost Lake Trail, Oakland Township, MI 48363

(248) 656-0999

Online Pre-Registration Required

Oakland Township Parks and Recreation and Dinosaur Hill Nature Preserve have partnered to bring Oakland Township residents and others exciting programs at Lost Lake Nature Park! Family, friends and neighbors are invited to explore everything this partnership has to offer at one of these open houses. Open to all ages! We will be offering 2 sessions for each open house that'll take place on our reserved lakeside learning patio. **Each session will be 1.5 hours (12-1:30pm, and 2-3:30pm) and be limited to 15 active participants.**

All students and instructors must observe social distancing of 6 feet from others and wear a mask.

PRE-REGISTER ONLINE oaklandtownship.recdesk.com All families in attendance must register.

Price per person: \$5 (resident of Oakland Township) \$7 (non-resident)

Sunday, June 27, 2021: The Bottom of the Kettle

Lost Lake's namesake kettle lake is veritably teeming with life, both big and small. You don't need scuba equipment to witness the biodiversity beneath the olive waters, only a trusty dipping net. Join us for an afternoon beneath the sun as we explore the life that calls the bottom of our kettle lake home. We will be sweeping for insects, frogs, minnows, crayfish and more and observing them before returning our friends back to their home. Our youngest participants will even be putting together their own crayfish craft to take home!

Register by: June 24



Sunday, July 25, 2021: Slithering through the Meadows



Ecology is all about natural relationships found through nature. For instance, if you find yourself with a healthy kettle lake and wetland you're bound to have an abundance of frogs and where you have an abundance of frogs you're sure to find snakes. Snakes are incredibly fascinating to observe and have many unique behavioral and physical adaptations which make them a treat to talk about. Join us as we learn a little about native Michigan snakes and how to protect them at home before patrolling the woods for a slithering friend! We will even have an exotic snake in attendance to say hello to our guests! Our youngest participants will put together their own snake puppets to take home! **Register by: July 22**

Sunday, August 29, 2021: Just Below the Clouds

We will be wrapping up our summer of biome exploration with a look at a very unique place where few animals are able to explore-the sky. We will spend some time learning about our feathered friends and how they're preparing for summer to end, learn a few of our favorite spots to observe the fall migration, and learn how to attract specific birds to our feeders for observation at home. No aviary enthusiast class would be complete without putting together our own biodegradable birdfeeders to take home! **Register by: August 26**





Threatened AND Outcast

By Sue Neal, Executive Director, Dinosaur Hill Nature Preserve

Some species that are threatened by problems such as habitat loss have gained considerable support and protection. Think about cuddly looking koala and panda bears...or gregarious seeming dolphins...or awe inspiring tigers and elephants. What we sometimes forget is that there are a number of animals that are facing these same threats but are not commonly considered cuddly, gregarious or awe inspiring...these are species I have to come think of as the threatened AND outcast. Oakland Township is home to one such threatened outcast. So outcast, in fact, that the US Fish and Wildlife Service has determined that would not be 'prudent' to delineate critical habitat zones for them out of concern that it would lead to intentional destruction of or collection of the remaining individuals. Isn't it a sad plight when you are so outcast that the government is afraid to even let people know what areas need to be protected in order to save your species?!



Image 1 Crayfish chimney



Image 2 Massasauga Rattlesnake

By now you are probably wondering what species it is that we have here that faces such an uphill battle in order to survive as a threatened outcast. Well, it is none other than the Massasauga rattlesnake. I know it can be hard to empathize with a snake. Many people have a real fear of any snake, and especially a venomous snake. I will admit that the mere *sound* of a rattlesnake triggers some sort of instinctual, visceral 'time to run' feeling any time I hear it unexpectedly.

While the rattle sound is unsettling, it is a snake's way of letting us know that it is there so 'let's both win this and go our separate ways'. Massasauga are nonaggressive, shy, have no interest in biting a person (unless we are aiming to hurt them) and certainly does not stand to gain anything from a confrontation. If we can get over our initial fear of the sound, the rattle of the Massasauga (and any other rattlesnake) is actually a pretty cool adaptation! The rattle is made of the same kind of materials as our hair and finger nails (keratin). It is comprised of a series of loosely nested segments. Every time the snake sheds its skin, a new segment is added so you can actually age a snake based on the number of segments in its rattle.



Image 3 Rattle crosssection

The rattle makes the distinct sound when the snake uses special muscles that contract to shake the rattle at a high rate of speed...these muscles will contract at a rate of 50-100 times per second! In fact, the contraction is so fast that it is up there among the most amazingly fast muscles alongside the hummingbirds. Plus, a snake can sustain this ratline for up to two hours! Try shaking your finger THAT fast and try to keep that up for two hours!!!! Phew, you might get tired just thinking about it! One last interesting fact: since they are cold blooded, a snake can rattle faster when it is warm out then when it is cold.



Image 4 Camouflaged

In addition to the pretty cool adaptation of the rattle and the special muscles to make it shake, Massasauga are also masters of disguise. They are well camouflaged and

(Continued on page 27)

Oakland Township Parks and Recreation

2021 Summer Fitness and Wellness Programs

Register online: oaklandtownship.recdesk.com

The health of our community is our priority. Our team of staff and instructors are trained in safety protocol that follow CDC guidelines and are equipped with Personal Protection Equipment and gear (PPE). Except for fully vaccinated persons, face masks must be worn when 6' distancing is not possible.

All Levels Yoga (Outdoor)

Adults 12+

Cranberry Lake Farm, 388 West Predmore, Oakland, MI 48363

Sundays, June 13 - July 25, 2021 (no class July 4) 9:30am-10:30am



Slow Flow Yoga (Outdoor)

Adults 12+

Cranberry Lake Farm, 388 West Predmore, Oakland, MI 48363

Sundays, June 13 - July 25, 2021 (no class July 4) 11:00am-12:00pm

Up Dog Yoga, Red Lotus Yoga and Oakland Township Parks and Recreation are teaming up to bring you **in-person** yoga! The “All Levels” classes will accommodate all skills levels with an option to modify. The “Slow Flow” class will be more of a challenge with longer holds and postures. Maximum 15 participants per class.

Residents: \$30

Non-Residents: \$45

Register by June 10

Tai Chi Beginners (Outdoor)

Adults 18+

Cranberry Lake Farm, 388 West Predmore, Oakland, MI 48363

Tuesdays, August 3 - September 21, 2021 6:00pm - 7:00pm



Find peace and serenity from a busy, stressful day through Tai Chi. Tai Chi exercises the mind and body by increasing wellbeing and improving balance, coordination and strength. During this **in-person** program, students will learn the basic forms and elegant movements of the Yang Style Short Form Tai Chi. Students should be able to support their weight while standing or bring a chair if unable to stand. Students should wear loose and comfortable clothing and shoes, No flip flops or sandals. Traditional Tai Chi shoes are optional. Bring water bottle. Led by Marci Jenkins who has over 20 years of Tai Chi training and practice. Maximum 10 participants per class.

Residents: \$40

Non-Residents: \$60

Register by July 28

Next Step Tai Chi Beginners (Outdoor) Adults 18+

Cranberry Lake Farm, 388 West Predmore, Oakland, MI 48363

Wednesdays, August 4 - September 22, 2021 6:00pm - 7:00pm

Continue playing Tai Chi by learning the remaining movements of the Yang Style while reviewing the basic principals of Tai Chi. This class is for those students who have already learned the first third of the Yang Style (Chen Man Ching) tai chi form and/or have the permission of the instructor. Led by Marci Jenkins who has over 20 years of Tai Chi training and practice. Maximum 10 participants per outdoor class.



Residents: \$40

Non-Residents: \$60

Register by July 29

Register online: oaklandtownship.recdesk.com

Oakland Township Parks and Recreation
2021 Summer Nature Programs

Register online: oaklandtownship.recdesk.com

The health of our community is our priority. Our team of staff and instructors are trained in safety protocol that follow CDC guidelines and are equipped with Personal Protection Equipment and gear (PPE). Except for fully vaccinated persons, face masks must be worn when 6' distancing is not possible.

Free Fishing

Families

Saturday, June 12, 2021 9:00am - 12:00pm
Lost Lake Nature Park, 8436 Lost Lake Trail, Oakland, MI 48363



Fishing is a part of Michigan's heritage and a relaxing pastime. There's no room for cell phones, texting, or tv on the dock. This program is a chance to try out fishing without needing to purchase equipment or a fishing license! For these socially distant times we are reworking this program to keep families safe during the festivities. We will split everyone into three groups and cycle through three stations where you will have a chance to fish off the dock and learn the basics of fishing, put together a gummy-worm bait craft, and participate in an interactive lesson on Michigan fish!

Residents and Non-residents: Free Register by: June 5

All family members in attendance must register. Children under age 5 must be accompanied by an adult.

Tiny Turtle Relay Race

Ages 3-5 years old

Tuesday, June 22, 2021 10:00 - 11:00am
Bear Creek Nature Park, 740 West Snell Rd., Rochester, MI 48306



There's nothing we like more than observing turtles that live throughout our park systems. Something about their slow pace and sunbathing lifestyle fills us with peace. Join us as we engage in a terrific turtle day! We will be warming up with a short story read to us by a turtle puppet before being introduced to a real life Eastern Box Turtle who we can pet, hold, and learn about! Afterwards we will put the rumors of turtles being slow to the test as we try and beat the turtle in a short race (with prizes!). We will even use our prizes to put together a turtle craft to take home! Lastly we will take a short stroll out to the pond to see some wild turtles taking in some sunlight! There will be no sharing of equipment and we shall remain socially distant on the lawn. Participants are asked to bring their own blanket to sit on!

Residents: \$5 Non-residents: \$7 Register by: June 15

The Field Biologist

Ages 7-11 years old

Wednesday, July 7, 2021 1:00 - 2:30pm
Bear Creek Nature Park, 740 West Snell Rd., Rochester, MI 48306



There are so many different fields of science to pursue, but personally we find none as exciting as field biology. Join us at the beautiful Bear Creek Nature Park as we take out our science journals, look at bugs beneath microscopes, sweep the ponds for frogs and aquatic life to observe and learn about and cruise the park while we learn about animal behaviors and physical body parts as we investigate birds, squirrels and insects in the canopy. We will investigate insects, frogs, seeds and more! To keep a proof of their hard work in the field of biology, our field biologists will be taking their science journals home!

Residents: \$5 Non-residents: \$7 Register by: June 30

The Dance of the Fireflies Campfire

Families

Friday, July 9, 2021 9:00 - 10:30pm
Lost Lake Nature Park, 846 Lost Lake Trail, Oakland, MI 48363



Join us for a unique seasonal park experience as we gather around a campfire for a fiery lesson in some of nature's nocturnal friends. For the summer we will be taking a close look at our flying LED lights: the fireflies. We will be sharing a few of our favorite firefly myths from around the world, learning how they chemically produce light (using a diabolically named substance), putting together our own firefly puppets to take home, and enjoying some socially distant s'mores before turning our attention to the woods for a firefly frolic! Participants are encouraged to bring your own insect repellent.

Residents: \$5 Non-residents: \$7 Register by: June 30 All family members in attendance must register.

Oakland Township Parks and Recreation
2021 Summer Nature Programs

Register online: oaklandtownship.recdesk.com

The health of our community is our priority. Our team of staff and instructors are trained in safety protocol that follow CDC guidelines and are equipped with Personal Protection Equipment and gear (PPE). Except for fully vaccinated persons, face masks must be worn when 6' distancing is not possible.

Cranberry Lake Park Adventure

Saturday, July 24, 2021

Cranberry Lake Park, 388 West Predmore, Oakland, MI 48363

We will be taking over the Cranberry Lake Park for an afternoon of exciting adventure as we explore the beautiful rolling meadows, lakeside and historical farmstead of this diverse park.

We will be lending out maps and compasses to learn about orienteering on the trails while searching for treasure, putting together a cranberry themed craft by the barn and even meeting a few friendly native animals who might have family living at this park! All activity stations will be socially distant with a priority toward safety. Maximum 30 active participants.

Residents: \$5 Non-residents: \$7 Register by: July 20

All family members in attendance must register. Children under age 5 must be accompanied by an adult.

Families

12:00 - 2:00pm



Seasonal Adult Hike: The System of Trees

Sunday, August 22, 2021

Cranberry Lake Park, 388 West Predmore, Oakland, MI 48363

While walking through the woods it is easy to get caught up in the majesty of the wildflowers dusting the ground, or the large leafy vines which ascend into the canopy, to hear nothing but the sound of countless critters communicating and defending their territories all around us....But we find the noble tree is often underrepresented. Join us at Cranberry Lake Park as we explore the world of trees while learning the biology of how they're composed, how to count and decipher a tree ring, the nuances of stomata respiratory cycles and more. We will even talk about the best trees to plant at home and how trees on the property are great for biodiversity at home! Participants will even be given their own saplings to take home and grow! Maximum 12 active participants.

Residents: \$5 Non-residents: \$7 Register by: August 17

Adults 18+

2:00 - 3:30pm



Outdoor Skills Camp Lost Lake Nature Park, 846 Lost Lake Trail, Oakland, MI 48363

Set your kids imaginations and adventurous spirits free as they learn about their amazing natural environment and the important skill of survival. Shelter, water, fire, and food. These camps are 100% hands-on and very active. Everything your kids learn, they will do-no indoor classrooms or lectures. It's a great way to pull your kids away from the TV or electronic devices and get them excited about the outdoors!

Outdoor Skills Camp

Monday, July 19 - Friday July 23, 2021

Basic outdoor skills including archery, kayaking, and fishing (catch & release). This course covers survival skills like reading a map, recognizing your surroundings, fire starting, shelter building, obtaining drinkable water, wild plant identification and animal observation.

Camp Fee: Resident: \$100

Non-resident: \$120

Register by: July 13

Grades 5 - 9

10:00am - 12:30pm



Next Step Outdoor Skills Camp

Monday, August 2 - Friday, August 6, 2021

Optional bonus session at Bald Mountain Gun Range Friday 2:00 - 4:30pm

An extension of Outdoor Skills Camp, activities range from archery refresher skills through target shooting games and beginning bow hunting, kayaking and fishing, animal identification and tracking, plant identification and edibles, land navigation, and a Survival Day finale. Optional gun safety session includes handling and basic shooting skills at Bald Mountain Gun Range (taught by NRA certified instructor). *Prerequisite: Outdoor Skills Camp or similar course.*

Camp Fee: Resident: \$100

Non-resident: \$120

Register by: July 30

Grades 5 - 9

10:00am - 1:00pm



Oakland Township Parks and Recreation

2021 Summer Outdoor Adventure Programs

Register online: oaklandtownship.recdesk.com

The health of our community is our priority. Our team of staff and instructors are trained in safety protocol that follow CDC guidelines and are equipped with Personal Protection Equipment and gear (PPE). Except for fully vaccinated persons, face masks must be worn when 6' distancing is not possible.

Fun Basics of Kayaking

Ages 10 - Adult

Saturday, June 26, 2021

10:00 - 11:30am

Register by: June 22

Saturday, July 31, 2021

10:00 - 11:30am

Register by: July 27

*Draper Twin Lake Park, 1015 Inwood Rd., Rochester, MI 48306**

This clinic is taught both on land and in the water and will focus on safety and introductory stroke techniques. Learn basic kayaking safety skills such as fitting your life jacket, what clothing to wear and getting into and out of your kayak from a dock. Basic paddling skills include forward, reverse, and turning strokes. Designed for new paddlers and anyone who would like formal instructions. Draper Twin Lake is an open calm flat water without jet skis and motor boats.

Residents: \$20 Non-residents: \$35

*Draper Twin Lake is a calm water lake. The distance from the parking lot to the dock, which has access, is approximately one-half mile via accessible path.

Rochester Soccer Club

Summer Instructional Soccer Camps

At Marsh View Park soccer fields in Oakland Township

Keep your kids busy while developing soccer skills this summer! Our summer camps provide a fun environment for players to learn new soccer skills, play games, make friends, and just be kids! Camps are open to a variety of ages and abilities. Campers are placed in age and skill appropriate groups so each player can develop and be successful - no matter their level of soccer experience.

Who: Soccer players ages 3 - 12 years old

When: Monday, July 19 - Friday, July 23, 2021

6:30 - 7:30pm (ages 3-5) 6:00 - 7:30pm (ages 6-12)

Location: Marsh View Park, 3100 East Clarkston Road, Oakland, 48363

Cost: \$90 per week for 6-12 and \$65 per week for ages 3-5

Campers receive an RSC summer camp t-shirt!

Things to bring: Each player should bring a soccer ball, shin guards, plenty of water, and sun-screen

The Staff: Coaching staff will include top soccer professionals from the Rochester Soccer Club as well as current and alumni RSC players.

For further information and to register: <http://www.rsosoccer.org/>



Oakland Township Parks and Recreation
2021 Summer Archery Programs

Marsh View Park, 3100 E. Clarkston Rd., Oakland, MI 48363

Register online: oaklandtownship.recdesk.com

The health of our community is our priority. Our team of staff and instructors are trained in safety protocol that follow CDC guidelines and are equipped with Personal Protection Equipment and gear (PPE). All Archery students, instructors, and spectators must observe social distancing of 6 feet from others and wear a mask.

Beginning Archery Ages 8 - Adult

Saturdays, June 19, - July 24, 2021 (no class July 3) 10:00 - 11:00am Register by: June 15

Saturdays, July 31 - August 28, 2021 10:00 - 11:00am Register by: July 24

Looking for something new and fun to try on a beautiful Summer Saturday morning?

This in-person fun class is for you and your family! Our instructors will cover safety, equipment and basic fundamentals of shooting. Sanitized equipment provided.

Maximum 10 participants. 5 weeks.

Residents: \$45

Non-residents: \$60



Next Step Archery Ages 8 - Adult

Wednesdays, July 7 - August 11, 2021 6:00 - 7:00pm

This in-person program is for archers who have taken Beginning Archery or archers with experience. Focus on improving your archery form and accuracy. Sanitized equipment provided or may use your own. Maximum 10 participants. 6 weeks.

Residents: \$60

Non-residents: \$75

Register by: June 30



Open Range Shoot Ages 8 - Adult FREE (pre-registration required)

Saturdays, April 24 - November 6, 2021 (no sessions May 22, May 29, July 3, or September 4)

Choose a session: 11:30am, 12:30pm, 1:30pm, 2:30pm

Tuesdays, June 8 - August 31, 2021 (no sessions July 27 or August 3)

Choose a session: 6:15pm or 7:15pm

Practice your archery skills. Children between 8 and 17 years of age must be accompanied by an adult. Range supervised by certified USA Archery Instructors. Not sure how to shoot? Range Masters can assist you with our **1st Shot Demo Program** - 5 minute teaching time/demo during Open Range Shoot Session Times. **Free Loan Program eligible** – bows, arrows targets provided or bring your own. Equipment will be sanitized between users and sessions. Social distancing will be practiced. All registrants must wear masks. Maximum of 10 participants per session. Registration ends one day prior to session.



Explore Archery Camp Ages 8 - Adult

Monday, July 12 - Friday, July 16, 2021 10:00am - 12:30pm

Explore Archery is a new and innovative archery education program focused on introducing beginners to the lifelong sport of archery. In Explore Archery, campers earn achievement awards through active participation in individual and team building activities that teach fundamental skills. This camp is not based on campers' athletic abilities or their capabilities to shoot a perfect score. It is fun, rewarding, and most important-safe!



Residents: \$100

Non-residents: \$120

Register by: July 6

The South Pointing Fish

By Sue Neal, Executive Director Dinosaur Hill Nature Preserve



Image 1 Guide using compass

We have grown so reliant on the technology that sits in our phones or in our cars which uses [GPS](#) to provide us detailed location and direction information that few of us think about the humble compass anymore. Those of us who grew up before GPS was a 'thing' might well remember learning map and compass skills – a right of passage in the Scouts and a classic part of sixth grade camp for us Oakland Township students. Even then, we took the compass for granted...have you ever wondered how the compass came to be?

The earliest origin of the [compass](#) can be traced back to one of the 'forbidden arts': geomancy and other forms of divination. Geomancy is similar to the more familiar practice of feng shui. In a very basic summary, these practices concern themselves with the proper orientation of homes and objects to reduce the chance of illness by balancing the forces of Yin and Yang. The Geomancer, thus, had to have a way to identify direction – not for navigation purposes, but for a perceived wellness purpose.

The primary tool of the Geomancer consisted of a bronze plate that had markings on it representing directions and a circle representing the heavens. In the center of the plate would freely rest a ladle shaped spoon. The ladle was shaped as it was in order to mimic the constellation of Ursa Major (the Great Bear) which is partly made up by the very recognizable constellation the Great Dipper. The 'spoon' was made of a special mineral called lodestone. Lodestone is a type of magnetite. Unlike regular magnetite, however, lodestone is one of the very few naturally occurring magnetized minerals. It is believed that lodestone is magnetized when exposed to the strong magnetic field associated with lightning strikes (which is why lodestone are normally only found close to the Earth's surface). The special magnetic properties of lodestone meant that the handle of the ladle would always point toward the south.



Image 2, Ladle Compass

While the early use of lodestone was for feng shui and other divination, it eventually became recognized for its importance in navigation. The use of lodestone for navigation was so important that this use provides insight to the name of the mineral. The name lodestone comes from the Middle English and means 'course' or 'leading' stone. Since the use of lodestone for Geomancing may have originated in China it is no surprise that they were also one of the earliest adopters of using this invention for navigation purposes. What culture can lay claim to the original discover of lodestone and its unique properties is a topic open to debate. It is believed that the earliest use of this form of the compass occurred

somewhere around the 2nd Century BC, though the first definitive mention of the use of the compass for navigational purposes does not appear until as recently as 1100 AD.



Galileo's Lodestone and Military Compass

PUBLIC DOMAIN, from Roger Clarke, Studies in Archiving and History of Science, Vol. 4, Oxford: The Clarendon Press, 1981

Image 3, Galileo lodestone

In addition to the bronze plate and ladle arrangement associated with the Geomancer, early navigational compasses were slightly different in design. They commonly consisted of a fish-shaped piece of wood with a needle of lodestone that was suspended in a bowl of water. Thus among the earliest compasses for navigational purposes is known as The South Pointing Fish!

The compass as we make it today no longer relies on the special properties of lodestone and instead use a process to simulate the naturally occurring magnetism. Modern compass needles are made of pig iron. Pig iron is made by combining iron ore, coke and limestone and heating it to a very high temperature in a blast furnace. The pig iron is then purified into

(Continued on page 20)



Phragmites Outreach Program for Oakland Township Residents

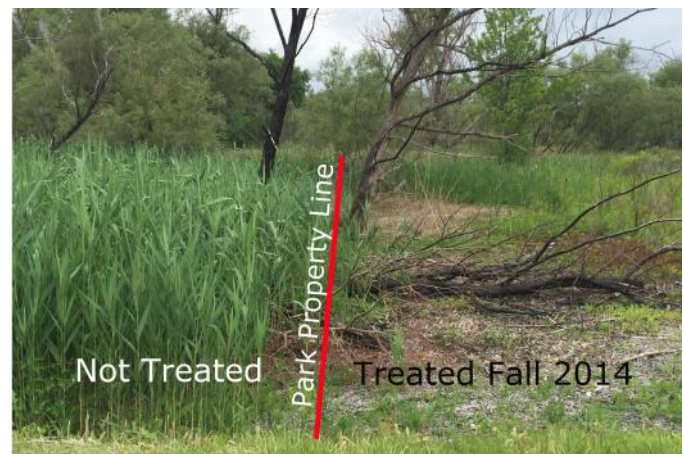
Phragmites does not recognize property lines, so we want to partner with you! This large, invasive grass grows primarily in wetlands and can reach heights of 15 feet or more. Phragmites (pronounced *frag-MY-tees*) can cause hot, damaging fires if ignited; blocks views at intersections; impairs drainage in streams; crowds out habitat for wildlife and native plants; and reduces property values. We realize that our efforts can only be successful if we collaborate with township residents!

Since 2015 Oakland Township Parks and Recreation (OTPR) has offered residents a cost effective and simple Phragmites control program that is modeled after existing, successful programs in nearby communities. OTPR simplifies the process for you by performing the following services:

1. Acquires a permit from [Michigan EGLE](#) to allow Phragmites treatment in wetlands.
2. Pre-qualifies contractor(s) to perform this work.
3. Requests competitive quotes for labor and materials to treat Phragmites for participating landowners.
4. Contracts with qualified companies to complete the treatment. Oakland Township Parks will not make money from this program.
5. Completes the end of season treatment report and submits to EGLE.

The landowner only has to request a no-obligation cost estimate, agree to treatment, and pay the contractor for treatment on their property (at cost). Please visit the Township website page to learn more about the program (goo.gl/ZTP18N).

To participate, landowners, homeowner's associations, or businesses can submit a request for a no-obligation cost estimate by August 1, 2021. As a courtesy to our contractors, applications received after August 1 cannot be considered. Please contact Ben VanderWeide, Natural Areas Stewardship Manager, with any questions or concerns at 248-651-7810.



Natural Areas Information at your Fingertips!

Have you checked out our blog recently? The [Natural Areas Notebook](#) has the latest about what's happening in the parks, news about the latest stewardship work, and up-to-date information about stewardship events. Find this and much more at oaklandnaturalareas.com.



Summer 2021 Natural Areas Stewardship Events

Please join us for one of our nature events! Updated information and any last minute changes to these events can be found on our Natural Areas Notebook website at oaklandnaturalareas.com.

Pre-register for all Stewardship events at: <https://oaklandtownship.recdesk.com>

All minors must have a waiver signed by a guardian, and minors under 14 must be accompanied by a guardian.

Weekly Bird Walks

Join us every Wednesday from June to the end of August for our weekly bird walks. We want to document the bird species using our parks so that we can work to improve their habitat. Walks will start at 8:00 am. Some extra binoculars are available. This summer walks will be limited to 15 participants per walk, and pre-registration is required. Please pre-register <https://oaklandtownship.recdesk.com/Community/Home>. All participants will need to follow social distancing and other safety rules. Walks may be cancelled due to COVID-19.

1st Wednesday of month – Bear Creek Nature Park

2nd Wednesday of month – Cranberry Lake Park

3rd Wednesday of month – Charles Ilsley Park

4th Wednesday of month – Draper Twin Lake Park

5th Wednesday of June – Watershed Ridge Park



Bird watching at Oakland Township Parks

Invasive Shrub Workdays at Bear Creek Nature Park

July 22, July 29, and August 6, 9 am to 12 pm

We will be removing invasive shrubs such as buckthorn and autumn olive to help native species thrive in the northern marsh at Bear Creek Nature Park. Wear solid boots, long pants, and a long-sleeved shirt and bring water and a snack. Tools and training will be provided. All workdays are 9 am to 12 pm. This summer workdays will be limited to 15 participants, and pre-registration is required. Please pre-register at <https://oaklandtownship.recdesk.com/Community/Home>. Meet at the Snell Road parking lot at 740 W. Snell Road. All participants will need to follow social distancing and other safety rules. Workdays may be cancelled due to COVID-19.

Volunteers Needed!

Would you like to learn new skills, work with a great team, and get more involved in local conservation? Our natural areas stewardship volunteers help with bluebird nest box monitoring, native seed collecting, prescribed fire, invasive species control, photo monitoring, pollinator garden maintenance, outreach, and more! We fit opportunities to your availability and interests. No special skills required. We'll provide all training and tools you'll need. To learn more contact Natural Areas Stewardship Manager Ben VanderWeide (bvanderweide@oaklandtownship.org).



IRON BELLE TRAIL | PAINT CREEK TRAIL NORTHERN TRAILHEAD

Parks and Recreation Natural Areas Team Update

Seasonal Land Stewardship Technicians



Parker Maynard returns to our crew this summer for a second season as a land stewardship technician. He was raised in Novi, Michigan and realized his love of the outdoors through camping and fishing as a kid. Through his experience earning a Bachelor's Degree in Environmental Science at Eastern Michigan University, Parker discovered an interest in maintaining and improving ecosystems. It is his goal to research and execute sustainable solutions for mitigating anthropogenic harm in vital areas. Parker is excited to be working with Oakland Township Parks and Recreation, and feels that it is the perfect opportunity for him to give back to the state that has provided so many of the natural resources and recreational activities that he has enjoyed throughout his life.

Katri Studtmann joins our crew this summer as a land stewardship technician. She graduated in May 2020 from Michigan Technological University with a degree in Ecology. At Michigan Tech, Katri was involved with a Fish Biology lab and the Women's Soccer team. She also has worked for the Wildlife Rehabilitation Center of Minnesota and the University of Minnesota. She hopes to one day pursue her master's degree in the future studying anthropogenic effects on the environment. Katri is excited to work for Oakland Township Parks and Recreation this summer to continue gaining more experience in the field. She loves to mountain bike, ski, run, and play soccer.



Maxwell Dunn lives on a quaint lake in Lake Orion and enjoys basking in nature's beauty, native plant landscaping, and reading. He is studying Crop and Soil Science at Michigan State University and worked on an organic farm in Clarkson for the past two years. He is grateful for the opportunity to preserve the native lands of Oakland Township and looks forward to consistently observing their development throughout the work season.

Our crew will be posting on oaklandnaturalareas.com so check regularly for new blog posts!

Thank you Stewardship Volunteers - Spring 2021

Volunteers

Ian Ableson, Erica Clites, Madelaine Corbin, Anne Curtis, Rachael Dolson, Kathleen Dougherty, Patrick Falle, Yachiyo Falle, Jim Fostey, Ruth Glass, Stacey Hahn, Louise Hartung, Mark Isken, Sharon Jourdan, Tom Korb, Rob Mair, Cam Mannino, Emily Messick, Vinnie Morganti, Laurie Peklo, Donna Perkins, Jon Reed, Karen Troshynski-Thomas, Bob Yager, Maryann Whitman, Judy Workings



Oakland Township Parks Support Plant and Pollinator Conservation

By Dr. Mary Jamieson

Habitat restoration and conservation efforts are essential for supporting vital pollination services provided by bees, butterflies, and other insects. These insects and other animal pollinators face many threats, including exposure to introduced parasites and diseases as well as chemical pesticides. Their biggest threat, however, is arguably habitat degradation and loss. The good news is that land managers and citizens can help these pollinators by restoring and protecting their habitat – which includes our parks and backyards. What do pollinators need? One of the most important resources is a diverse and abundant flowering plant community!

Due to a variety of human activities, many natural habitats have been degraded over time. Oakland Township Parks land managers use multiple strategies, including prescribed burns, invasive plant removal, and native plant restoration to improve habitat quality for plants, pollinators, other wildlife, and people! In order to help assess the value of these habitat conservation and restoration efforts for pollinators and the plants that support these important animals, I conducted a study with assistance from Oakland University students and photographer Joseph Ferraro in the summer of 2020. We inventoried plants and pollinators across several Oakland Township Parks. Data collected from this study provides a baseline for understanding how plant and pollinator populations may change over time, for better or worse.



Butterflies pictured from left to right, top to bottom: Eastern-tailed Blue, Common Buckeye, Delaware Skipper, Viceroy, Eastern Tiger Swallowtail. Photos by Mary Jamieson.

(Continued on page 20)

Oakland Township Parks Support Plant and Pollinator Conservation

By Dr. Mary Jamieson

(Continued from page 19)

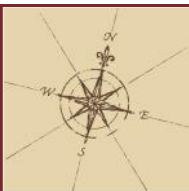
During our study, we documented 35 butterfly species and 46 bee species, including several species that are rare and/or vulnerable to population decline. Notably, we recorded three separate observations for the Golden Northern Bumble Bee (*Bombus fervidus*). This species is considered 'vulnerable' by international conservation groups due to recent population declines. It's estimated that more than a quarter of North American bumble bees face some degree of extinction risk, including the endangered Rusty Patched Bumble Bee (*B. affinis*). Like other pollinators, the primary threats to bumble bees are diseases, pesticide use, and habitat loss.



Golden Northern Bumble Bee visiting Cylindrical Blazing Star. Photo by Anna Tawril.

During our surveys, we found that bees are the primary insects providing pollination services. Bees represented 85% of all floral visitations observed. These bees support plant reproduction for many of our beloved native wildflowers and in turn these plants provide nectar and pollen resources that pollinators require for survival. Mountain Mint, Shrubby Cinquefoil, Woodland Sunflower, Wild Bergamot, and Butterfly Milkweed were among many native plant species providing valuable floral resources to pollinators in Oakland Township Parks.

Would you like to help pollinators? If you answered yes, then follow these four simple steps: (1) plant more native flowering plant species in your yard, (2) reduce or eliminate pesticide use (3) leave some bare ground in your yard for ground-nesting bees as well as dead plant stems or logs for cavity nesting bees, and (4) support local nature parks and ecological restoration efforts in your community! To learn more about what native plants best support pollinators in our area, visit the Jamieson Biodiversity Lab's Instagram @PlantsForPollinators.



The South Pointing Fish

By Sue Neal, Executive Director Dinosaur Hill Nature Preserve

(Continued from page 13)

steel by mixing it with oxygen. The steel is reheated and rolled, shaped and cut in to thin needles. By this stage, the needle would still be useless as a navigational tool until it subjected to an electronic magnetizer. Did you know that a compass can lose this magnetism either due to age or being exposed to a strong magnetic field? Interestingly, in physics, the measure of the ability to withstand exposure to a magnetic field without become demagnetized is known as 'coersivity'...a fascinating parallel with the word 'coercion'!

Want to harness the power of The South Pointing Fish for yourself? Consider joining Dinosaur Hill naturalists for the upcoming Cranberry Lake Park Adventure where we will use maps and compasses and head out on our own treasure hunt! See page 10.



Image 4 , Fish compass

Image credits: Image 1, Guide using compass, Superchilum, CC BY 3.0 <<https://creativecommons.org/licenses/by/3.0/>>, via Wikimedia Commons; Image 2, Chinese Ladle Compass, CC BY-SA 3.0, <https://commons.wikimedia.org/w/index.php?curid=553022> ; Image 3, Galileo lodestone compass, Charles Singer, Public domain, via Wikimedia Commons Image 4, Fish compass, Krishna Chaitanya Velaga, CC BY-SA 4.0 <<https://creativecommons.org/licenses/by-sa/4.0/>>, via Wikimedia Commons

Parks and Recreation Team Update

Welcome to Kim Newton, Parks and Recreation's new Clerical Assistant.

Kim has a back ground in education and customer service. Kim moved to Michigan from Western New York state in 2013 with her family. Since that time, she has been an active member of the community; volunteering at her children's schools as well as working for Rochester Community Schools from 2016-2019 as a Preschool Assistant. Kim enjoys assisting people and is keen to help you with your Parks and Recreation questions. You can find her at the front desk of the Oakland Township Parks and Recreation Office Monday – Friday 10:30am-4:30pm.



Administrative Staff



Fond farewell to Deb Gallo, who has retired after 16 years as the Clerical Assistant for Oakland Township Parks and Recreation. Deb always went above and beyond her position's requirements - whether that meant mastering our online program registration system, helping customers to complete park permits, managing the food service for our concerts and festivals, contacting countless program registrants, or dropping everything to help with last-minute requests. We will miss her smiling face, her optimism, and her readiness to take on each day's challenges. Her diligence and sense of duty set a standard for all of us. We wish Deb a long and joyful retirement with her friends and family - enjoying leisure activities such as travel, cooking, and gardening.

Disc Golf Equipment Available to Township Residents

Disc golf is a great way for people of all ages and abilities to spend time outdoors with friends and family while getting in a little exercise.

Residents of Oakland Township can now borrow our disc golf baskets and discs for free! It only takes 5-10 minutes and 3 easy steps to set up the portable *Mach Lite* disc golf baskets. Each *Mach Lite* basket weighs less than 27 pounds and comes in its own carrying case making them easy to transport and set-up on your own mini-course.

The total disc golf loan includes four baskets and four sets of discs. Set up your course in an Oakland Township Park or at your home!

Call the Oakland Township Parks and Recreation office at 248-651-7810 for further details.



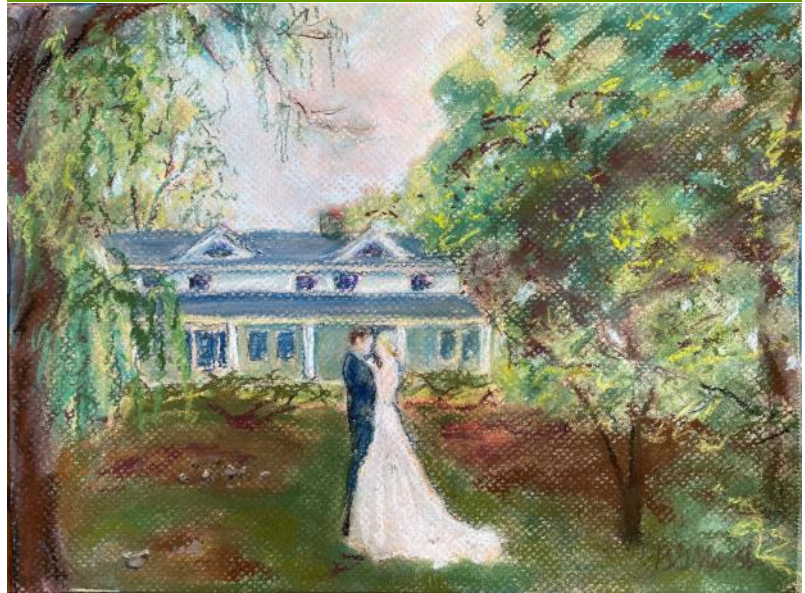
HAVE YOU VISITED YOUR HISTORIC PARK LATELY? CRANBERRY LAKE FARM HISTORIC DISTRICT



Painting by Judi Bender of Croquet being played at CLF (above). Watch for late August when we set up the grounds with croquet sets and provide instruction on how the game is played. We can always use an extra croquet set if you are parting with one. <http://bit.ly/OTHDC>

Cranberry Lake Farm is open for your enjoyment, relaxation, and exercise. Walk the grounds and see the history on display with old implements, stone barbeques, picnic areas, and scenic surroundings. Located at 388 West Predmore Road in northern Oakland Township. The sixteen acre historic district is listed in the National Register of Historic Places and represents a rural farmsteads evolution into a recreational retreat. Open dusk to dawn for hiking the grounds. For more information, please contact the Historic District Commission <http://bit.ly/OTHDC> or bbarber@oaklandtownship.org or office 248-608-6807. Follow us on Facebook @CLFdistrict.

Watch for many programs throughout the year!



Pastel painting by Betsy Marsh

Congratulations to the happy couples!
This way to the 'I do's' CLF

We are open for wedding ceremonies and receptions (sorry alcohol is not allowed in the park). We also have wedding photography FREE onsite, just make sure to bring your photographer and avoid the area when others have a private reservation.



Left; Chickens at CLF by Bobbie Tarbunas

ARE YOU UP FOR DOWN ON THE FARM?!

Save the date: Sat. Oct 2nd, 11am to 2pm

Chickens, horses, pumpkins, music, and more! In partnership Oakland Township Historical Society.

Painting by Sigrid Grace "Young Cowboy Wanna Be Meets First Horse Down on the Farm, Cranberry Lake"



HAVE YOU VISITED YOUR HISTORIC PARK LATELY? CRANBERRY LAKE FARM HISTORIC DISTRICT



THE HONEY BEES ARE BACK THIS YEAR!

We are planting pollinator friendly perennials, keeping our apple orchard pruned for many blooms, and not spraying pesticides. We need the honey bees to pollinate our fruit trees, so please be friendly to our farm bees. They are generally very docile unless you irritate them. Beekeeping classes are held in the hen house May-August. The 2021 class is full, however, if you are interested to learn more, please contact the HDC office.



Plein Air Thursdays at the Farm:
June 17, July 15, Aug 19, Sept 16
from 10 am to 2 pm

Cost: \$25 per person; Class size limit of 12

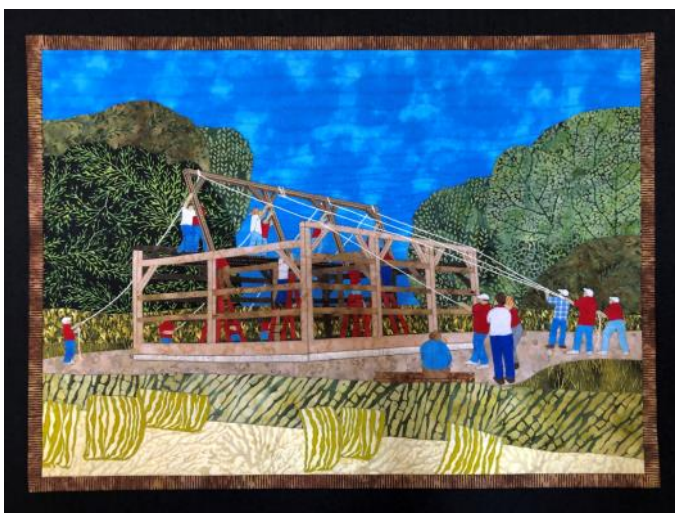
Please bring your own materials, mask, and a bag lunch. *This program will run if it is raining*

Program begins with a demonstration at 10am with a variety of unique techniques, outdoor painting, followed by lunch and informational critique. A great class for all levels! Join the rich experience of painting or drawing with two professional artists with scenery of historical buildings, beautiful landscapes and distant vistas. *Painting by Meg Constantine*



What's ahead in 2021? Back by popular demand, with music by The Ruffwater Stringband coming to play on Friday Sept 17 from 6pm to 8pm. During this festive time, the Oakland Township Historical Society will be offering their Flumerfelt Flea Market, so come by for a grand time and maybe leave with something in your hearts! (Early bird sales will have a small fee to enter.)

Below left 'Barn Raising at Cranberry Lake August 21, 2004' quilt by Mary Asmus Mary Asmus
Below right 'Cranberry Lake Trail' 18x14 acrylic on canvas board by Joel Grgurich





National Trails Day



Explore the Paint Creek Trail this National Trails Day by competing in our virtual scavenger hunt! Using the free GooseChase app, participants will be able to complete fun interactive multimedia challenges on the trail and have the chance to win a basket of prizes.

The scavenger hunt will run from May 30th through June 5th. Participants will be invited to complete a final mission on June 5th by visiting the Paint Creek Trail booth outside Cookies & Cream in downtown Lake Orion from noon to 3:00pm.

To participate, download the free GooseChase app on your smartphone and create an account. To join the game, enter 'National Trails Day' in the search box. You will then be able to create a new team or join a current one or you can play as an individual.

The game will automatically start on May 30th at 12:01am and missions will be available to complete until June 5th at 2:59 pm. Your score is determined by the total points earned, so feel free to play throughout the week.

For more information, visit <http://paintcreektrail.org/wordpress/2021-national-trails-day/>.

(Continued on page 25)



(Continued from page 24)

Paint Creek and Polly Ann Trails to Host Detroit Institute of Arts Inside | Out Program



The Paint Creek Trail and the Polly Ann Trail will host the Detroit Institute of Arts' popular Inside|Out program this year. A total of eight reproductions will be placed at sites along both trails as well as along the new Clarkston Road connector in Orion Township.

The artworks will be placed within walking or biking distance of one another allowing trail users to enjoy a pleasant day out on the trails. Pieces will be located in the Village of Oxford, Orion Township, the Village of Lake Orion, and Oakland Township. An interactive map showing the exact locations of the artwork will be available on the DIA's website for the duration of the installation from early June through October. For more information, visit <https://www.dia.org/insideout>.

New Amenities at Moutrie Pollinator Garden

Two new amenities have recently been added to the trail's pollinator garden which is located about ¼ mile north of Tienken Road in Rochester Hills. A Free Little Library was generously donated by the Behen family in memory of their daughter and sister Morgan Behen. Trail visitors are encouraged to take a book to read or leave one for someone else to enjoy.

To accommodate cyclists visiting the garden, a new bike rack was also recently placed at the site. The bike rack features a beautiful inset butterfly and was generously donated by the Aust family in memory of their wife and mother, Bobbie S. Aust.

The pollinator garden features low-maintenance, native plants in support of pollinators and is named in honor of the late David Moutrie, a former Trail bike patroller. A ribbon cutting ceremony for the garden is scheduled for Monday, June 28th at 4:00 p.m.

(Continued on page 26)

Paint Creek Trail News

By Melissa Ford, Trail Manager manager@paintcreektrail.org



New Free Little Library and bike rack at the Moutrie Pollinator Garden

Trail Courtesy

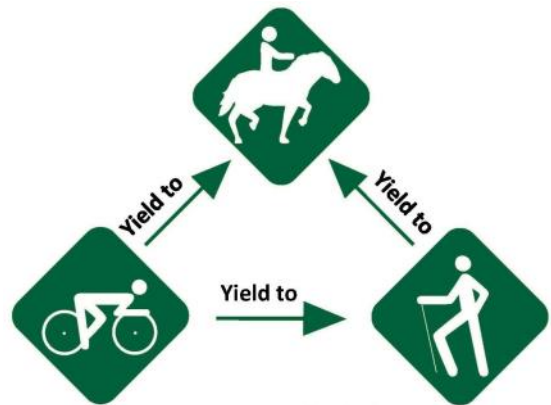
As a reminder, please continue to be courteous to others while out on the trail:

Cyclists – Pass with care: Stay to the right, pass on the left: “Do the right thing – pass with a ring!” Please announce with a verbal “on your left” or ring a bike bell.

Pedestrians and Cyclists – avoid spreading out: Please don’t block the width of the trail. Stay to the right, and watch your surroundings – a cyclist may be trying to pass you on the left. Cyclists and pedestrians must both yield to horses on the trail.

Cyclists – Please use safe speeds on the trail: Cyclists should adapt their speed to conditions and others on the trail. Bicycle racing and race training is not allowed.

Obey all Signage: Please remember to obey all street signs, signals, and road markings on the trail and at intersections. Always stop and look for approaching vehicles before crossing roads.



[facebook.com/PaintCreekTrail](https://www.facebook.com/PaintCreekTrail)



twitter.com/PaintCreekTrail



PaintCreekTrail.org



Threatened AND Outcast

By Sue Neal, Executive Director, Dinosaur Hill Nature Preserve

(Continued from page 7)

easily blend in to their surroundings. Another amazing adaptation is their status as a venomous snake. Venomous snakes have special teeth that act like needles to inject venom into their prey. Compared to many other venomous snakes, though, Massasauga inject a relatively small amount of venom when they bite. Scientists study snakes like the Massasauga to learn about what kinds of medicines could be derived from the unique properties of snake venom (such as localized anticoagulants).

While they are great predators, with some pretty neat adaptations and may hold value in the development of

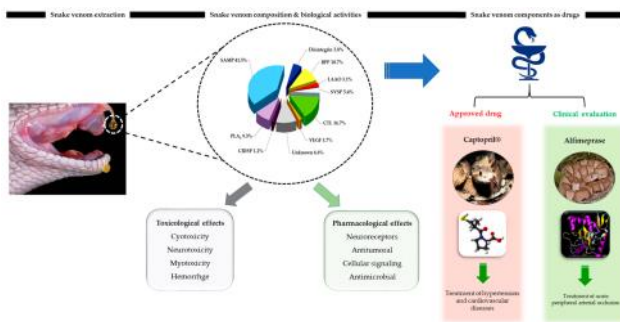


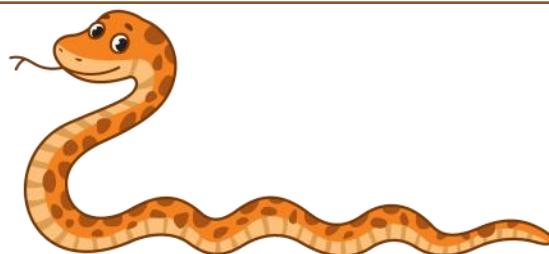
Image 5

medicines, Massasauga are a threatened species in Michigan. They are also listed as endangered in a number of other states. The primary threats to Massasauga are habitat loss, habitat fragmentation, direct killing of individuals and collection by the private pet trade. These snakes rely on a special kind of habitat of wetlands with surrounding dry uplands. Development often either directly destroys wetlands, fragments wetlands or disturbs the natural balance of the wetlands through runoff. Further, many people kill individual snakes out fear and unscrupulous collectors will capture wild snakes to sell in the pet trade.

I know I probably haven't convinced you that Massasauga are cuddly, or gregarious or awe inspiring but I hope you can agree that these are fascinating animals that we can respect and not fear. They need to be protected just as much as species that we perceive as more 'desirable'...you don't have to want to snuggle one in order to agree that they should be protected! Preserving large areas of naturally occurring wetlands can give these snakes the habitat they need to flourish...along with strictly adhering to laws against the wild collection for the pet trade and not killing the remaining few out of an unjustified sense of fear would go a very long way toward ensuring that the Massasauga will have a chance to continue to be an important and unique part of our ecosystem. All of this can be done and these snakes can survive without putting anyone at risk.

Want to learn more about Massasauga and other cool snakes in Oakland Township? Register for the July 25 Open House at Lost Lake Nature Center. See page 6.

Photo Credits: Image 1, Crayfish Chimney. USFWSmidwest, Public domain, via Wikimedia Commons; Image 2 & 4 <https://mnfi.anr.msu.edu/species/eastern-massasauga-rattlesnake>; Image 3, A cross section of a rattlesnake rattle with a single segment highlighted to show how it interlocks with its neighboring segments. (Josh Cassidy/KQED); Image 5, Snake Venoms in Drug Discovery: Valuable Therapeutic Tools for Life Saving; by Tarek Mohamed Abd El-Aziz, OrcID, Antonio Garcia Soares, and James D. Stockand



What's New in the Parks ...

(Continued from page 2)

(Continued from page 2)

Oakland Township Receives \$50,000 Grant for Paint Creek Junction Trailhead from Ralph C. Wilson, Jr. Legacy Funds at the Community Foundation for Southeast Michigan

funding sources the development and operation of this much-needed support facility would not be possible.

Please see below for more information on the Ralph C. Wilson, Jr. Legacy Funds and the Community Foundation for Southeast Michigan.

The Community Foundation for Southeast Michigan is a full-service philanthropic organization leading the way to positive change in our region. As a permanent community endowment built by gifts from thousands of individuals and organizations, the Foundation supports a wide variety of activities benefiting education, arts and culture, health, human services, community development and civic affairs in the seven counties of southeast Michigan. The Ralph C. Wilson, Jr. Legacy Funds at the Community Foundation for Southeast Michigan honor Mr. Wilson's charitable legacy by supporting efforts across the region in caregiving, design & access, and youth sports, as well as for community assets in Mr. Wilson's home community of Grosse Pointe. For more information, please visit www.cfsem.org.

**Ralph C. Wilson, Jr.
Legacy Funds**
OF THE
Community Foundation

FOR SOUTHEAST MICHIGAN

Survey of Plants and Insect Pollinators in Township Parks

Oakland Township Parks' Natural Areas Stewardship was fortunate in 2020 to have the assistance of the Jamieson Biodiversity Lab at Oakland University in performing a survey of plants and insect pollinators in six Township parks. See page 19 for a summary of their excellent work or visit our Natural Areas Notebook (oaklandnaturalareas.com) to read their entire report.



Dr. Mary Jamieson and Anna Tawril from Oakland University leading butterfly monitoring training at Draper Twin Lake Park summer 2020.



Marsh View Park pavilion overlooking athletic fields.

Moving Forward with New Trailhead at Paint Creek Junction Park!

By Mindy Milos-Dale, Director, Oakland Township Parks and Recreation

(Continued from page 1)

Recently Oakland Township selected Premier Group Associates (PGA) as the project's general contractor, based upon their cost-effective proposal and their experience improving many municipal parks in southeast Michigan. PGA has started construction and expects this project to be completed in Fall 2021 without any interruption to Paint Creek Trail users.

"We are very excited about this project, and our partnership with Oakland Township Parks and Recreation. Additional parking and restroom facilities in this area have been listed in our Recreation Master Plan for over 20 years," said Paint Creek Trail Manager Melissa Ford. Since the Paint Creek Trail is an important link in the statewide Iron-Belle trail system, this project also supports that trail too!

Ralph C. Wilson, Jr. Legacy Funds

OF THE

Community Foundation

FOR SOUTHEAST MICHIGAN





Oakland Township Parks and Recreation Program Refund Policy

Registrants will receive a full refund for programs cancelled by Oakland Township Parks and Recreation. Registrants withdrawing more than 4 business days prior to the program start date will receive a refund, less a \$5.00 administration fee. No refunds will be made if withdrawing less than 4 business days from program start date. All registrants wishing to withdraw, must do so during regular business hours Monday-Friday, 8am-4:30pm by phone at 248-651-7810 or by email at knewton@oaklandtownship.org. Visit www.oaklandtownship.org for complete program information and other Park and Recreation information, permits, and ordinances.



Oakland Township Parks and Recreation 2020-2021 Registration Information

Oakland Township resident registration starts NOW!

(This is for residents living within the Oakland Township boundary.)

Non-Resident registration begins one week prior to the program registration deadline date.

Programs fill-up quickly so please register early!

Registration Options:

1. **ONLINE:**

We encourage everyone to use our online program registration system at:

<https://oaklandtownship.recdesk.com>

You can register for an Oakland Township program at any time, from anywhere you have an internet connection, using a credit card (MasterCard, Visa, or Discover). If you have questions feel free to call 248-651-7810 and we will be happy to walk you through the system.

2. **BY MAIL:**

For a printable registration and waiver forms visit www.oaklandtownship.org. Send the completed forms by USPS mail to: Oakland Township Parks and Recreation, 4393 Collins Rd., Rochester, MI 48306. Or drop off your registration and waiver forms in the after hours DROP-BOX at Oakland Township Hall, 4393 Collins Rd., Rochester, 48306.

Make checks payable to **Oakland Township Parks and Recreation**.

Mail at least two weeks before program date!

3. **IN PERSON:**

Visit us at our office location and register in person, M-F, 8am-4:30pm.

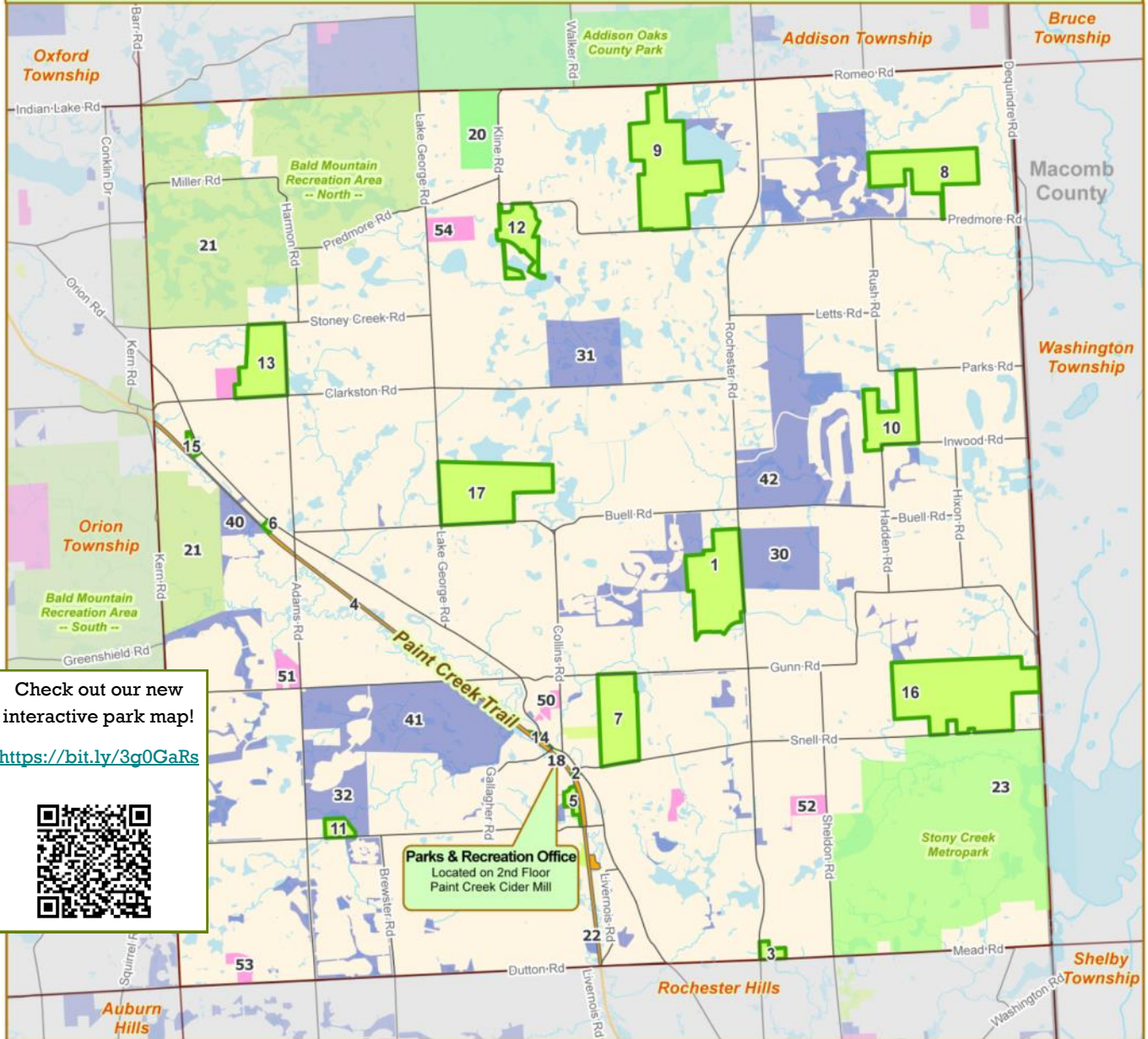
You can pay by credit card (MasterCard, Visa, American Express, or Discover accepted with \$2.95 fee) or by cash or check.

Paint Creek Cider Mill Building (2nd Floor)

4480 Orion Road, Rochester, MI 48306

Registration and waiver forms must be signed by each registrant or (the parents/guardians of minor) to participate in our programs. Find liability waivers at www.oaklandtownship.org > Township Departments > Parks and Recreation > Programs > scroll to the registration form and waiver that you need in center of page.

Parks and Recreation Opportunities in Oakland Township



Check out our new interactive park map!
<https://bit.ly/3g0GaRs>

Parks & Recreation Office
 Located on 2nd Floor
 Paint Creek Cider Mill

Oakland Township Parks and Recreation Facilities

Conservation Areas

1. Blue Heron Environmental Area
2. Mill Creek Crossing
3. O'Connor Nature Park
4. Paint Creek Heritage Area- Fen
5. Paint Creek Heritage Area - Wet Prairie
6. Paint Creek Trail Parcel

Community Parks & Recreation Facilities

7. Bear Creek Nature Park
8. Charles Ilsley Park
9. Cranberry Lake Park
10. Draper Twin Lake Park
11. Gallagher Creek Park
12. Lost Lake Nature Park
13. Marsh View Park
14. Mill Race Trail
15. Paint Creek Junction
16. Stony Creek Ravine Nature Park
17. Watershed Ridge Park
18. Paint Creek Cider Mill (Parks & Rec Office)

Other Parks and Recreation Facilities

Other Public Parks

20. Addison Oaks County Park
21. Bald Mountain State Recreation Area
22. Paint Creek Trail
23. Stony Creek Metropark

Other Public Recreation Facilities

30. Blackheath Golf Club
31. The Myth Golf Club
32. Westwynd Golf Club

Private Recreation Facilities

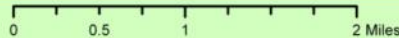
40. Royal Oak Archers
41. The Wyndgate Golf Course
42. Twin Lakes Golf & Swim Club

Public Schools

50. Baldwin Elementary School
51. Delta Kelly Elementary School
52. Huger Elementary School
53. Musson Elementary School
54. Oakview Middle School

Key to Features:

- Municipal Boundary
- Lakes & Ponds
- Paint Creek Trail
- Private Recreation
- Major Roads
- Streams & Rivers
- Public Recreation
- Public School

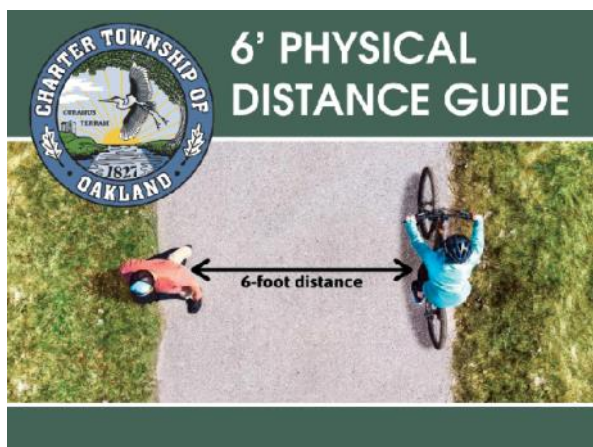


Leaflet | OpenStreetMap contributors, Imagery © Mapbox

Parks and Recreation Commission
Charter Township of Oakland
4393 Collins Road
Rochester, MI 48306-1670

PRESORTED
STANDARD
US POSTAGE PAID
ROCHESTER, MI
PERMIT NO 73

Phone: (248) 651-7810
Fax: (248) 601-0106
www.oaklandtownship.org



Commission Meetings

The Parks & Recreation Commission meets at 7 pm on the second Wednesday of every month. Please see www.oaklandtownship.org for meeting agendas and packets.

Office Hours and Location

Park permits, maps and descriptions are available at the Parks and Recreation Department office, located on the second floor of the Paint Creek Cider Mill, 4480 Orion Road. Check Parks & Recreation page at www.oaklandtownship.org for office hours.

Parks and Recreation Commissioners

Brian Blust, Chairman
Dan Simon, Vice Chairperson
Craig Blust, Treasurer
Emily Barkham, Secretary
Jim Quesenberry, Commissioner
Cathy Rooney, Commissioner
Judy Workings, Commissioner

Oakland Township Parks and Recreation Staff

Parks and Recreation Director	Melinda Milos-Dale
Administrative Assistant	Carol Kasprzak
Clerical Assistant	Kim Newton
Recreation Manager	Becky McLogan
Recreation Program Assistant	Julie Schoenherr
Maintenance Foreman	Doug Caruso
Maintenance Technician	Jeff Johnson
Seasonal Maintenance Technician	Dan Barton
Natural Areas Stewardship Manager	Dr. Ben VanderWeide
Stewardship Specialist	Grant VanderLaan
Seasonal Land Stewardship Technicians	
Max Dunn, Katrianna Studtmann, Parker Maynard	
Maintenance and Recreation Staff	
John McDowell, Clif Selent and Robert Zbytowski	



Online
Registration



Facebook
Page



Interactive
Map



Instagram



Natural Area
Notebook

Oakland Township Park Rules are enforced by the Oakland County Sheriff's Office.

FOR EMERGENCIES CALL 911

FOR NON-EMEGENCIES CALL 248-858-4950

If you would like to report an incident in any of the parks, please call the substation at 248-652-4617 Monday-Friday, 8 am-4 pm.

Outside of these hours please call Oakland County dispatch at 248-858-4950.

Any other questions concerning parks can be answered by the Park Office at 248-651-7810