

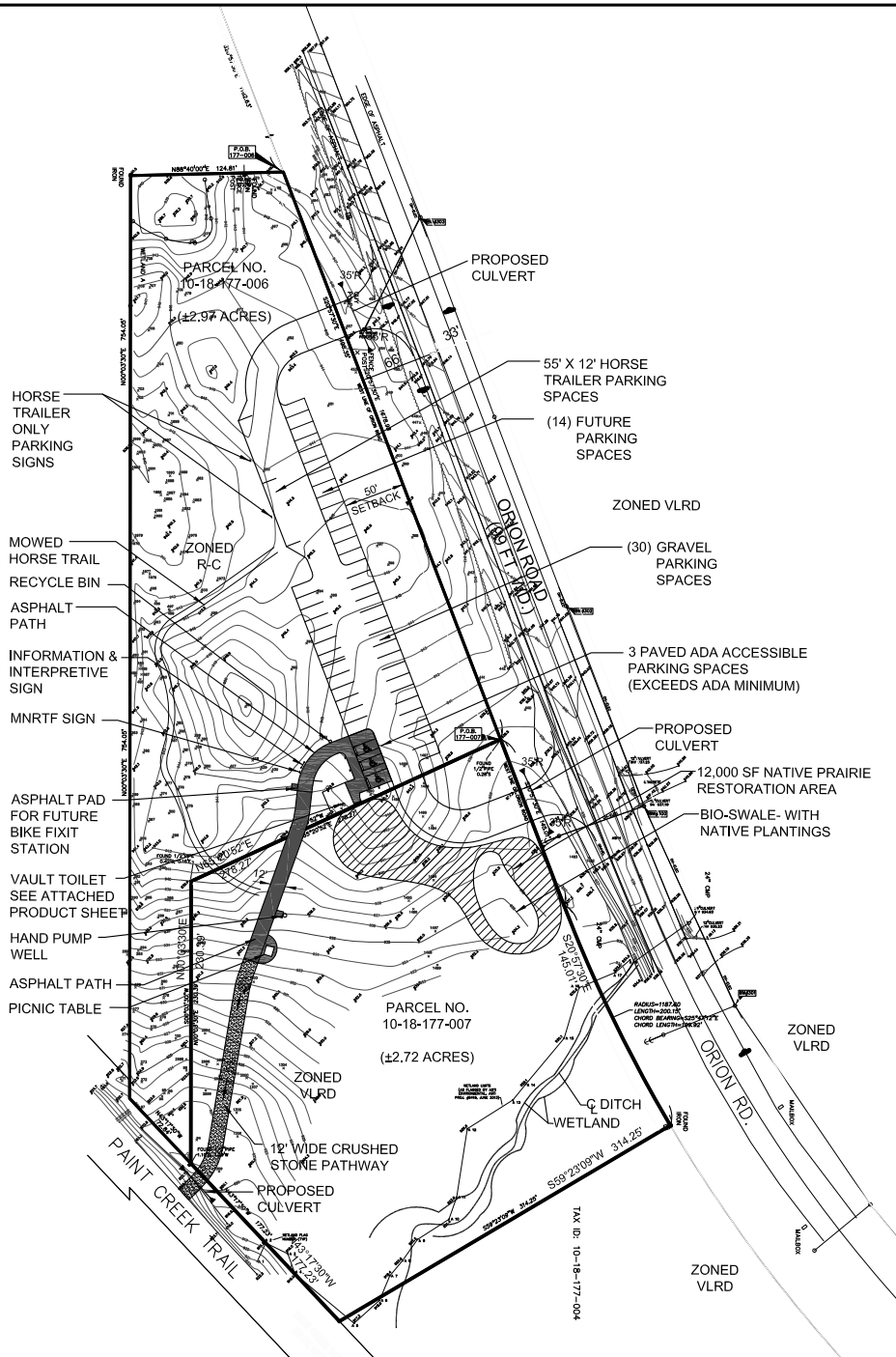
NOTE:
 PROJECT SITE IS OWNED BY CHARTER TOWNSHIP OF OAKLAND WITH THE EXCEPTION OF THE CONNECTION TO THE PAINT CREEK TRAIL, WHICH IS OWNED BY THE PAINT CREEK TRAIL

5.69 ACRES: TOTAL SITE AREA

2.97 ACRES: ON CHARTER TOWNSHIP OF OAKLAND PARCEL 10-18-177-006

2.72 ACRES: ON CHARTER TOWNSHIP OF OAKLAND PARCEL 10-18-177-007

STORMWATER AND EROSION CONTROL WILL BE IN ACCORDANCE WITH THE OAKLAND COUNTY DRAIN COMMISSIONER'S REQUIREMENTS



SITE DEVELOPMENT PLAN

SCALE: 1"=150'

CHARTER TOWNSHIP OF OAKLAND
 4393 COLLINS ROAD
 ROCHESTER, MICHIGAN 48306

SITE DEVELOPMENT PLAN
 TF18-0098
 IRON BELLE- PAINT CREEK TRAIL
 NORTHERN TRAILHEAD DEVELOPMENT

CHARTER TOWNSHIP OF OAKLAND, OAKLAND COUNTY, MICHIGAN

DES. JTS	SUR. PEA	SCALE 1"=150'	JOB NO. OA1808
DN. JTS	P.M. JTS	DATE 09-21-18	DWG. NO. 5



PEA, Inc.

2430 Rochester Ct., Ste. 100
 Troy, MI 48063-1872
 t: 248.689.9090
 f: 248.689.1044
 www.peainc.com