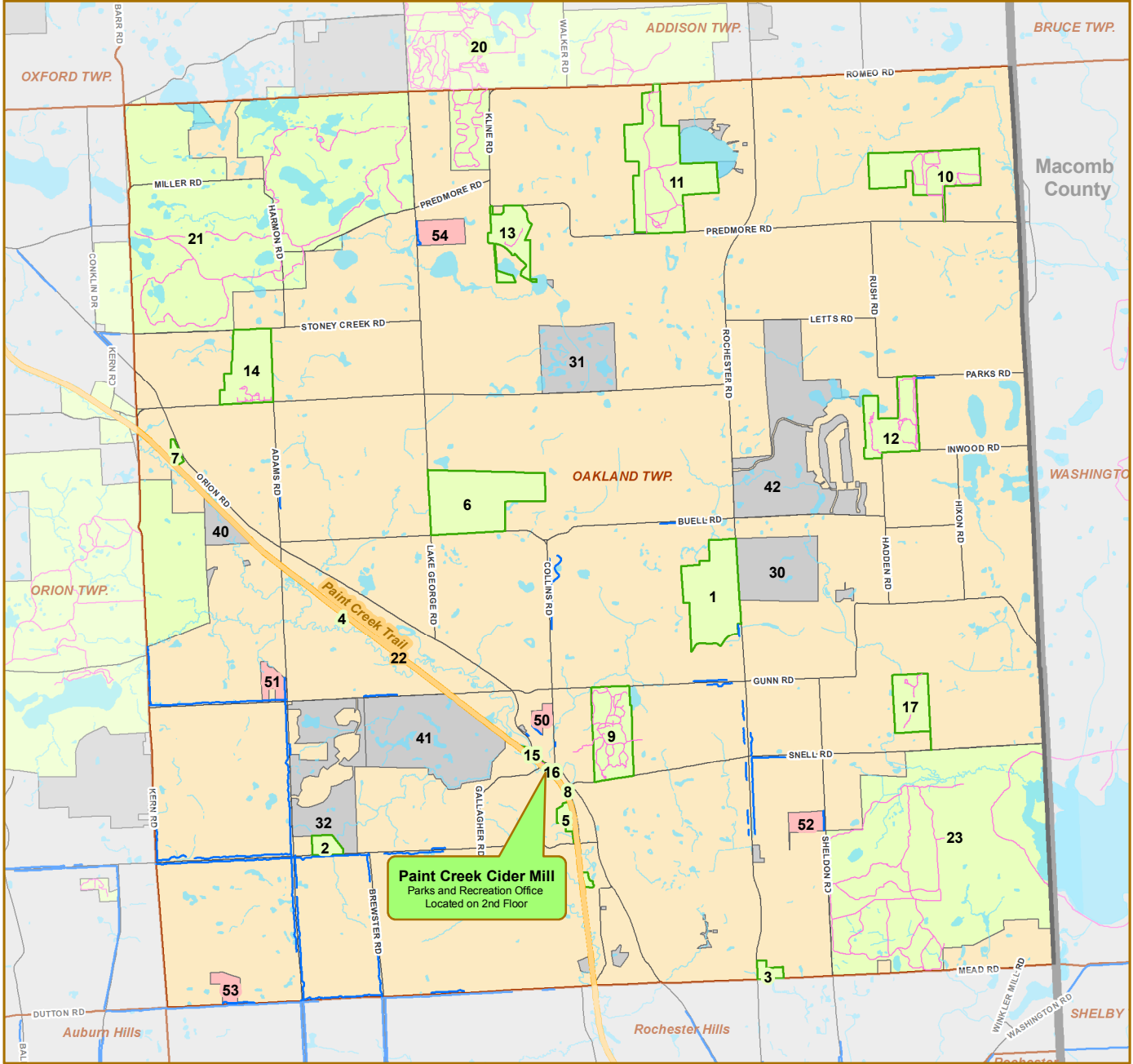


Parks and Recreation Opportunities in Oakland Township



Paint Creek Cider Mill
Parks and Recreation Office
Located on 2nd Floor

Oakland Township Parks and Recreation Facilities

Conservation Parks

1. Blue Heron Environmental Area
2. Gallagher Creek Park
3. O'Connor Nature Park
4. Paint Creek Heritage Area - Fen
5. Paint Creek Heritage Area - Wet Prairie
6. Watershed Ridge Park

Future Trail Connections

7. Marsh View Connector
8. Mill Creek Crossing

Parks Including Recreation Facilities

9. Bear Creek Nature Park
10. Charles Ilsley Park
11. Cranberry Lake Park
12. Draper Twin Lake Park
13. Lost Lake Nature Park
14. Marsh View Park
15. Mill Race Trail
16. Paint Creek Cider Mill
17. Stony Creek Ravine Nature Park

Other Parks and Recreation Facilities

Other Public Parks

20. Addison Oaks County Park
21. Bald Mountain State Recreation Area
22. Paint Creek Trail
23. Stony Creek Metropark

Other Public Recreation Facilities

30. Blackheath Golf Club
31. The Myth Golf and Banquet
32. Westwynd Golf Course

Private Recreation Facilities

40. Royal Oak Archers
41. The Wyndgate Golf Course
42. Twin Lakes Golf and Swim Club

Public Schools

50. Baldwin Elementary School
51. Delta Kelly Elementary School
52. Hugger Elementary School
53. Musson Elementary School
54. Oakview Middle School

Key to Features:

- Oakland Township
- Lakes & Ponds
- ~ Major Roads
- Park Path
- Paint Creek Trail
- Private Recreation
- Municipal Boundary
- Rivers & Streams
- Oakland Township Park
- Safety/Side Path
- Public Recreation
- Public School



N



Last Update: 02/12/2013